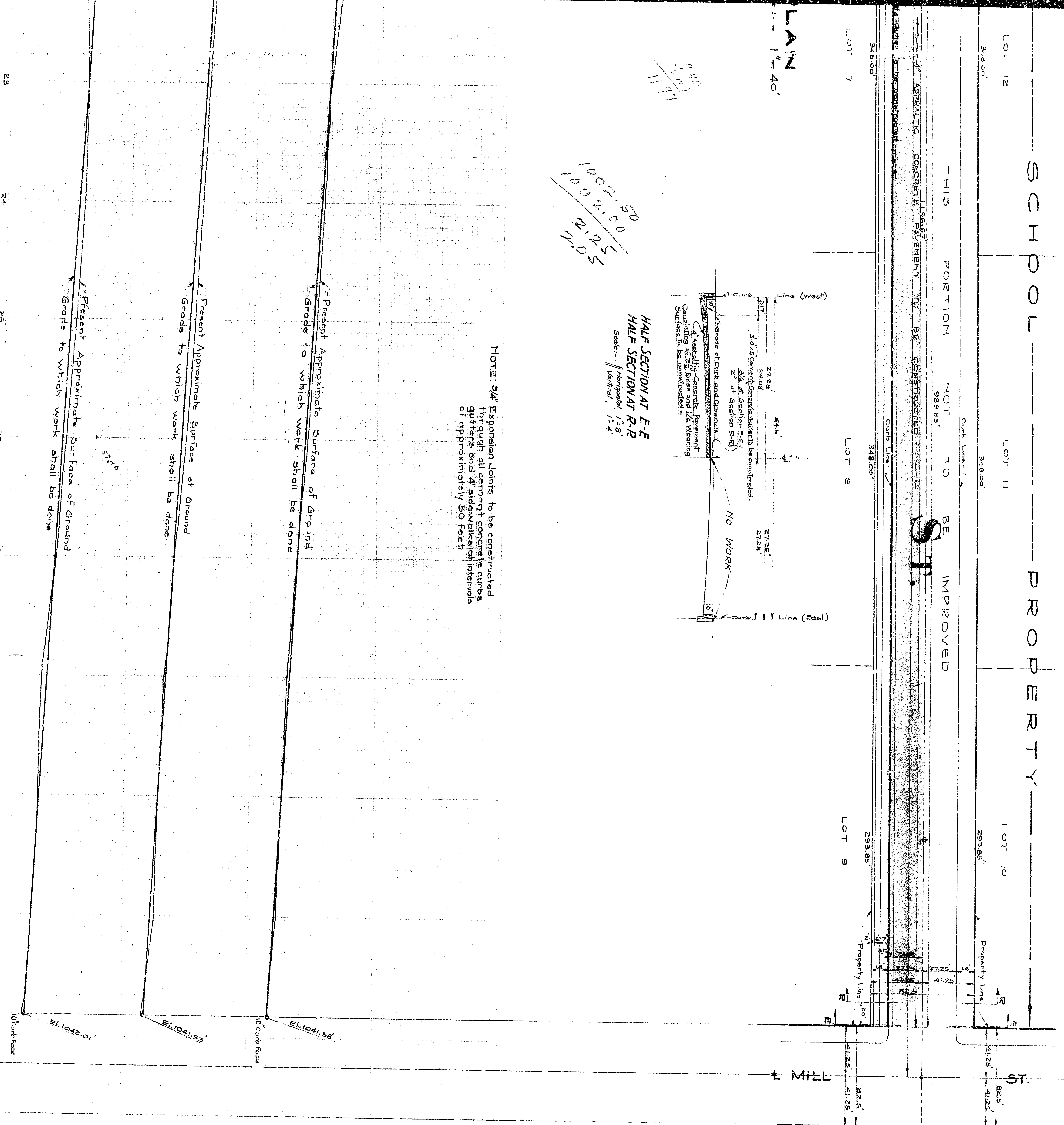


SCHOOL PROPERTY

THIS PORTION NOT TO BE IMPROVED



**LEGEND**

- 1 of 1/2 means inch or inches.
- N. means north of feet.
- E. means east of feet.
- St. means center lines.
- El. or Elev. means elevation.
- St. means Street.
- R. B. means Rancho San Bernardino.
- 1/2" x 1/2" means the thickness of concrete.
- Cement Concrete Slab. means concrete slab.
- Cement Concrete Slab and Wick. means concrete slab with wick.
- Cement Concrete Slab Top. means concrete slab top.
- Spillway. means a spillway.
- 1/2" x 1/2" means the thickness of concrete.
- Standard. means standard.

1002.50  
1000.00  
2.50  
W.S.

HALF SECTION AT E-E  
HALF SECTION AT R-R  
Scale: Horizontal, 1" = 8'  
Vertical, 1" = 4'

NOTE: 3/4" Expansion joints to be constructed through all cement concrete curbs and slabs at approximately 50 foot intervals.

**STREET TITLE**

Title of "K" Street and Mill Street to City of San Bernardino is by dedication of Rancho San Bernardino as recorded in Book 7 of Maps of Page 2, Records of County Recorder of San Bernardino County.

**STREET GRADES**

Grade of "K" Street established by Ordinance No 603 on 11-6-31. Grade of Mill St established by Ordinance No 739 and Resolution No 78, City of San Bernardino.

**DATUM**

All Elevation shown in "and" are in feet, and are above a plane which is 1045.28 ft below the City Bench Mark as established by Ordinance No 383 City of San Bernardino, California.

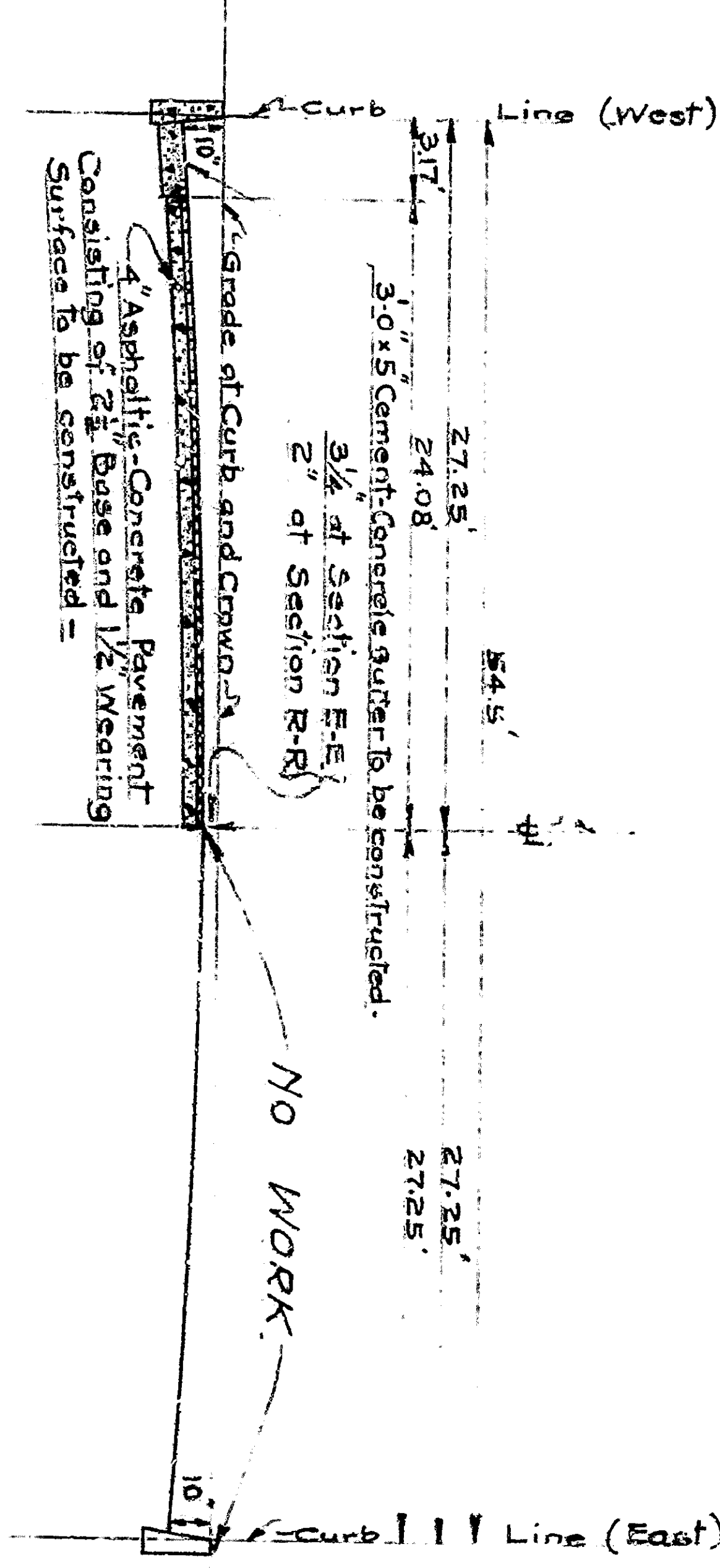
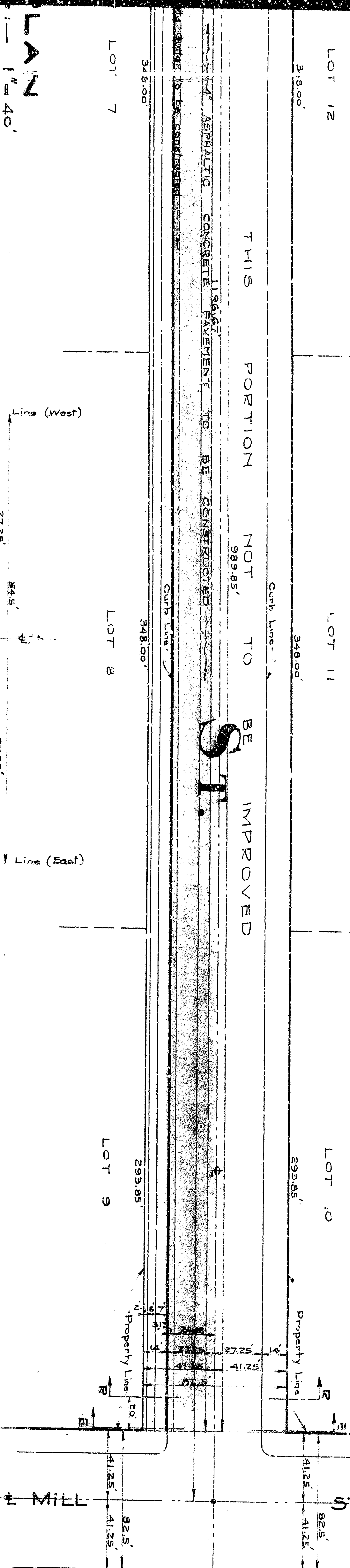
Plan adopted November 16, 1931.

BETWEEN RIAL

JULY

SCHOOL PROPERTY

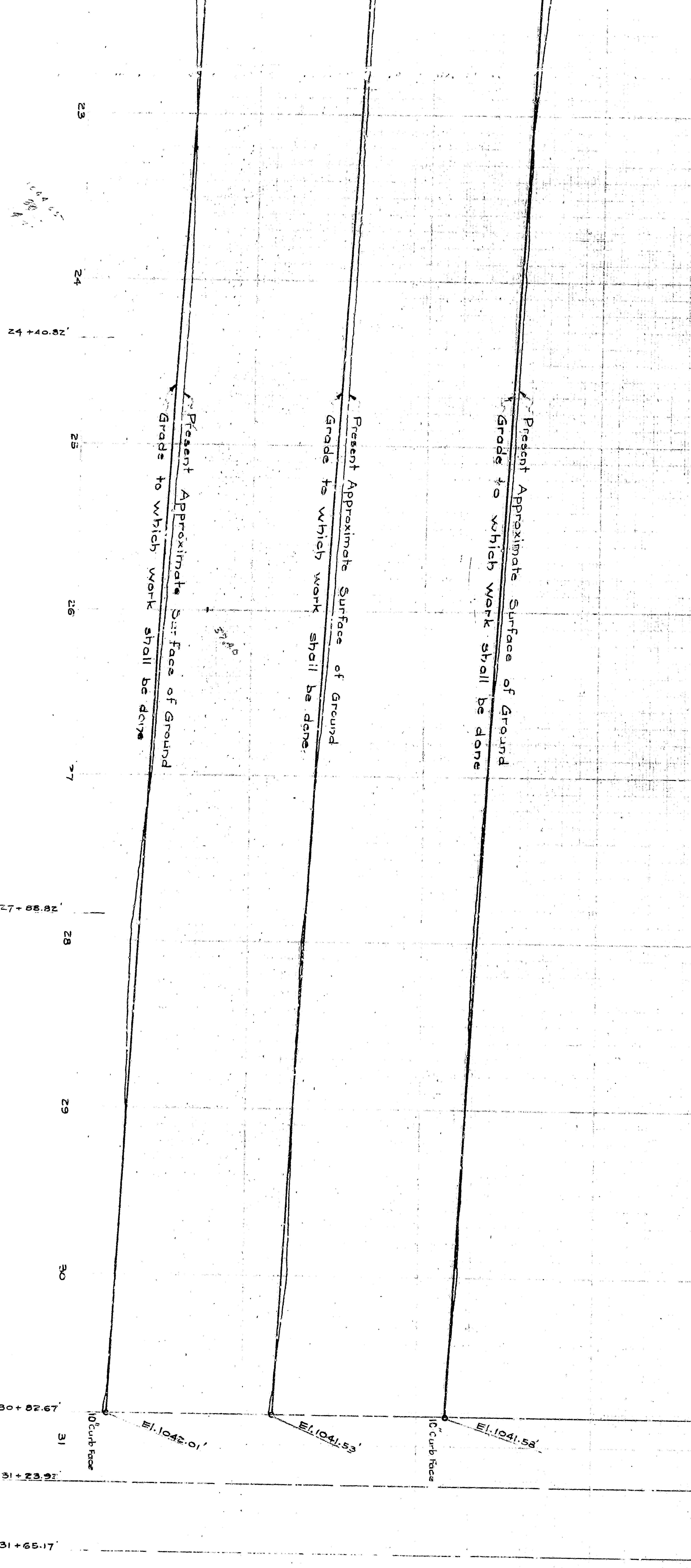
THIS PORTION NOT TO BE IMPROVED



10021.50  
10021.50  
M.P.S  
11.41

HALF SECTION AT E-E  
HALF SECTION AT R-R  
Scale: Horizontal 1"=8'  
Vertical 1"=4'

NOTE: 3/4" Expansion Joints to be constructed through all cement concrete curbs and sidewalks at approximately 50 feet intervals.



LEGEND

- 1 or 1/2 in. means inch or inches.
- Nr. means foot or feet.
- ± means center lines.
- El. or Elev. means elevation.
- St. means Street.
- Av. means Avenue.
- R. 3. 0. means Rancho San Bernardino.
- 1/2" x 1/2" means 1/2 inch by 1/2 inch.
- 1/2" x 1/2" means 1/2 inch by 1/2 inch.
- Cement Concrete Slab Top, to be constructed, shown thus: [Symbol]
- 6" Cement Concrete Slab Side-Walk, to be constructed, shown thus: [Symbol]
- 4" Cement Concrete Slab, to be constructed, shown thus: [Symbol]
- Cement Concrete Curb, to be constructed, shown thus: [Symbol]
- 5" Cement Concrete Curb, to be constructed, shown thus: [Symbol]
- 4" Asphaltic Concrete Pavement, to be constructed, shown thus: [Symbol]
- 5" Cement Concrete Pavement, to be constructed, shown thus: [Symbol]
- ± Standard (vertical) Iron Pipe, hand rolling to be replaced and reconstructed shown thus: [Symbol]

STREET TITLE

Title of "K" Street and Mill Street to City of San Bernardino is by dedication of Rancho San Bernardino as recorded in Book 7 of Maps of Page 2, Records of County Recorder of San Bernardino County.

STREET GRADES

Grade of "K" Street established by Ordinance No 603 on 11/63 - Grade of Mill St. established by Ordinance No 739 and Resolution No 78, City of San Bernardino.

DATUM

All Elevations shown in "nd" are in feet, and are above a plane which is 1045.28 ft. below the City Bench Mark as established by Ordinance No 389 City of San Bernardino, California -

Plan adopted November 16, 1931.

BETWEEN RIAL

JULY